

SUMMER 2022

INTERNATIONAL SOCIETY FOR PHARMACOEPIDEMIOLOGY

STUDENT COUNCIL NEWSLETTER



Students of the
International Society
for Pharmacoepidemiology
Student Council



GREETINGS FROM THE ISPE SOCIETY

HELLO FROM THE ISPE PRESIDENT

Greetings ISPE Student Council Members,

It is so wonderful to see this amazing newsletter detailing all of the exciting activities that the Student Council has been engaged in this past year. Involvement in ISPE affords unique opportunities to learn important pharmacoepidemiology methods for the use of real-world data, share results from pharmacoepidemiologic studies, engage in scientific discussions, and develop new collaborations. Our Society's particularly strong emphasis on student skills development, methodologic training, and networking is aimed at helping you to achieve your professional goals and position you to advance the field of pharmacoepidemiology. Specific ways to achieve this in ISPE include:

ISPE Mentor-Mentee Match: This program (see: <https://www.pharmacoepi.org/get-involved/mentor-match/>) is designed to help ISPE members develop their capabilities and expand their professional networks across different geographical regions and professional sectors so that they are better able to fulfill their goals as pharmacoepidemiologists.

ICPE Pre-Conference Skills Courses: These courses are available prior to each annual ICPE and offer instruction on a variety of pharmacoepidemiologic research methods. One particular course aimed at early-stage investigators, the "Pharmacoepidemiologist's Toolbox for Professional Empowerment," discusses professional development topics concerning important tools to apply to your own career paths.

ISPE Mid-Year Meeting: This year, the ISPE Student Council worked closely with the 2022 Mid-Year program committee to organize a thoughtful program to facilitate the transition from student or postdoctoral researcher to your initial job, help you become the best versions of yourselves, and project that to others. There were sessions that considered "What Should a Well-trained Pharmacoepidemiologist Look Like in 2030?" and "What are essential skills for pharmacoepidemiology in the 21st century?" Other sessions explained how to present your research using a TED-style approach, discussed do's and don'ts for landing the perfect job, and provided opportunities to deliver and get feedback on presenting your background, body of research, and goals for your career. There were even roundtables with representatives from institutions/organizations that are seeking to hire new talent in pharmacoepidemiology.

ISPE Education and Career Centers: ISPE maintains a valuable Education Center (<https://www.pharmacoepi.org/resources/education-center/>) from which to gain additional learning on-demand and a Career Center (<https://careers.pharmacoepi.org/>) from which to learn about new job opportunities in the field of pharmacoepidemiology.

ISPE Special Interest Groups (SIGs): There are a number of SIGs that focus on specific methodologic and clinical topic areas (<https://www.pharmacoepi.org/communities/sigs/>). SIGs bring together a critical mass of interested individuals in these topic areas, allow for dissemination of important information, cross-pollination of ideas, and expansion of research networks that can help advance your scientific ideas.

These are just some ways for you to get involved in ISPE. Of course, the ISPE Student council is a fantastic place to start. Our Council connects students from all over the world and allows students to discuss important ideas and issues specific to their career stage. It also provides an important voice within our Society. As President of ISPE this year, I have seen how the ISPE Student Council, under the leadership of **Sebastian Jugl** and **Miyuki Hsing-Chun Hsieh**, have helped the ISPE Executive Committee and Board of Directors to address key issues and shape our Society for the future.

I want to congratulate Sebi and Miyuki for their leadership and wish to extend my extreme appreciation for the tremendous efforts of the Student Council membership for bringing these activities to fruition. I hope that you will consider becoming more deeply involved in the ISPE Student Council and attending ISPE's conferences and webinars in the future.

With Best Wishes,



Vin Lo Re, MD, MSCE, FISPE

President, ISPE

HELLO FROM THE ISPE STUDENT COUNCIL

Dear student members,

During the past 2 years, the COVID-19 pandemic has had a tremendous impact on our daily activities. Participating in online courses and conferences has formed a new routine, and certainly Zoom fatigue has become a thing. Luckily in this year, the ICPE annual conference will be returning to an in-person format. The Student Council looks forward to meeting you at the Copenhagen conference and we would like to welcome you to all of our well-designed student activities, which you can also find [HERE \(https://reurl.cc/leZg39\)](https://reurl.cc/leZg39) !

Although the COVID-19 pandemic has disrupted the pace of our lives, we have three new student chapters in our society, namely the China Pharmaceutical University, Center for Pharmacoepidemiology and Treatment Science student chapter, Rutgers University student chapter and The Dutch ISPE Student Chapter. A big welcome to all of our new chapters – and we are looking forward to hear from all of your exciting activities in the near future!

In the past year, the Student Council has accomplished bountiful events. We completed the second phase of SISPE 5 year agenda survey. We learned that students are highly interested in career development and opportunities, as well as educational events, networking activities among students and trainees, and to get more engaged in ISPE. As such we designed and hosted many activities & events that were tailored to identify interests, including student onboarding meetings in March, to let everyone understand the vision and responsibilities of ISPE and SISPE, and how to participate more actively as students in the society. As member of the scientific program committee for this year's Mid-Year meeting we also participated in designing and organizing a new format of the mid-year meeting this April, which was a great success. The meeting provided students who are interested in entering the job market a stage to present themselves and to have the opportunity to learn about potential career options in the future. We also collaborated with the Academic Council and launched a series of webinars since March. Furthermore, the student council secured funding as part of the strategic plan initiative to develop in collaboration with the academic council, education committee, and the P&CC a new student section on ISPE's homepage, and a living library which will incorporate training, and professional development resources, as well as scientific and educational content in pharmacoepidemiology. As a first step in this initiative, and to further enhance the communication between student members across the globe, we will be creating a student Calendar on the SISPE webpage. We welcome all of our student chapters to

provide us with information on any chapter related activities that are open to students from different chapters. We will assist in promoting relevant events to facilitate cross-chapter interactions. Finally, we'd like to express our gratitude for the continued support we received from the ISPE society throughout this year, and especially our student members. We hope you enjoy the read of the SISPE newsletter & See you in Copenhagen!

Sincerely,



Sebastian Jugl, ISPE Student Council Chair
Department of Pharmaceutical Outcomes & Policy, College of Pharmacy, University of Florida



Miyuki Hsing-Chun Hsieh,
ISPE Student Council Co-Chair
Institute of Clinical Pharmacy and Pharmaceutical Sciences, National Cheng Kung University

ACKNOWLEDGEMENT TO EDITOR VOLUNTEERS



Zi-Yang Peng
Institute of Clinical Pharmacy and Pharmaceutical Sciences, National Cheng Kung University



Jamie Heyward
Department of Epidemiology, Johns Hopkins Bloomberg School of Public Health

TABLE OF CONTENTS

STUDENT COUNCIL NEWSLETTER

GREETINGS FROM THE ISPE SOCIETY	2
--	----------

HELLO FROM THE ISPE PRESIDENT	2
-------------------------------	---

HELLO FROM THE ISPE STUDENT COUNCIL	4
-------------------------------------	---

ACKNOWLEDGEMENT TO EDITOR VOLUNTEERS	5
--------------------------------------	---

TABLE OF CONTENTS	6
--------------------------	----------

SISPE BULLETIN BOARD	8
-----------------------------	----------

EVENTS OF THE YEAR	8
--------------------	---

GET INVOLVED!	11
----------------------	-----------

STUDENT ON-BOARDING MEETINGS	11
------------------------------	----

JOIN THE ISPE STUDENT COUNCIL!	11
--------------------------------	----

STUDENT CALENDAR	12
-------------------------	-----------

THE 2ND PHASE SURVEY OF THE SISPE 5-YEAR AGENDA	13
--	-----------

SPECIAL REPORT OF 2022 MID-YEAR MEETING	14
--	-----------

WELCOME NEW CHAPTERS OF 2021-2022	15
--	-----------

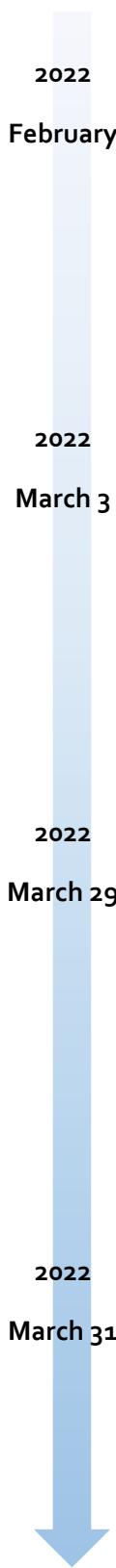
CHINA PHARMACEUTICAL UNIVERSITY (CPU) ISPE STUDENT CHAPTER	15
--	----

RUTGERS UNIVERSITY ISPE STUDENT CHAPTER	20
---	----

THE DUTCH ISPE STUDENT CHAPTER	22
--------------------------------	----

NEWS FROM STUDENT CHAPTERS	24
JOHNS HOPKINS UNIVERSITY ISPE STUDENT CHAPTER	24
UNIVERSITY OF MARYLAND, BALTIMORE (UMB) ISPE STUDENT CHAPTER	27
NATIONAL CHENG KUNG UNIVERSITY (NCKU) ISPE STUDENT CHAPTER	30
UNIVERSITY OF TORONTO ISPE STUDENT CHAPTER	33
UNIVERSITY OF FLORIDA ISPE STUDENT CHAPTER	34
UNIVERSITY OF ILLINOIS AT CHICAGO ISPE STUDENT CHAPTER	38
PENN-CPERT ISPE STUDENT CHAPTER	39
UNIVERSITY OF MANITOBA ISPE STUDENT CHAPTER	43
ISPE MENTOR MATCH AND PEER-MENTORSHIP PROGRAMS	45

EVENTS OF THE YEAR



2022
February

Second phase of the 5-Year Agenda survey



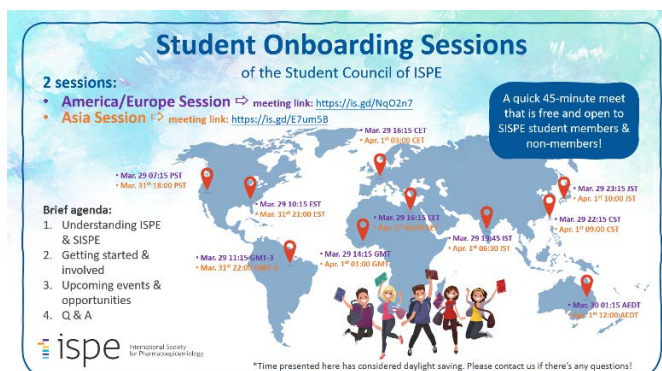
2022
March 3

SISPE X Academic council webinar – Immeasurable time bias*



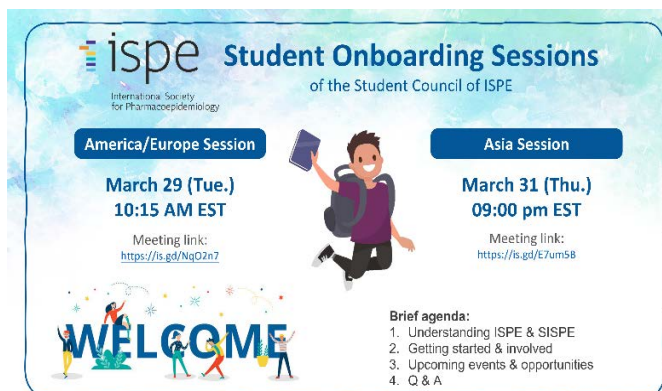
2022
March 29

Student onboarding meeting – America/Europe session



2022
March 31

Student onboarding meeting – Asia session



2022
April 12-13

2022 Mid-year meeting
(virtual)



2022
June 9

SISPE X Academic
council webinar –
Utilizing social media to
advance your career as a
pharmacoepidemiologist
*



2022
June 24

ISPE Mentor Match and
Peer-Mentorship
Programs



2022
July 11-13

African Regional Interest
Group Virtual Meeting



2022
August 9

SISPE X Academic council webinar X MiPaL SIG– Methodological considerations for pregnancy research in pharmacoepidemiology*



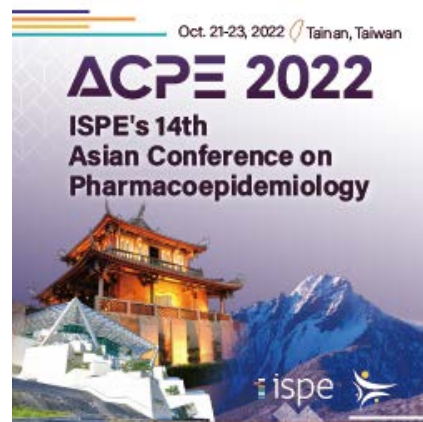
2022
August 24-28

2022 ICPE annual conference



2022
Oct 21-23

ISPE's 14th Asian Conference on Pharmacoepidemiology



*Recordings of webinars can be accessed at the educational resource of ISPE webpage.

GET INVOLVED !

STUDENT ON-BOARDING MEETINGS

The student council had hosted 2 sessions of student on-boarding meetings in March 2022 with focuses on introducing the vision and responsibilities of ISPE and SISPE, and how you could get the most out of your membership. To know more, feel free to contact the Student Council (sispechair@gmail.com). The Student Council is planning to put the relevant materials onto the ISPE website and everyone who is interested in more involvement are welcome to access the information at the SISPE webpage (<https://www.pharmacoepi.org/communities/councils/student-council/>)! Please stayed tuned with any announcement via ISPE Exchange, SISPE social media channels, or your chapter's email inbox!



ISPE Student Group



@S_ISPE



JOIN THE ISPE STUDENT COUNCIL!

To help the student council meeting interests & needs of a growing SISPE community, we are going to expand the core members of the student council by 3 additional positions! New positions are hereby based upon our society wide surveys. For more information about the positions, please see below. If you are interested in any of the positions please fill out the [application form](#) and email it to us (sispechair@gmail.com)! Of course, feel free to ask us any questions.



Position of the student council	Requirement / commitment	Responsibility
Co-chair	ISPE student member with experience of chapter leadership; 2-year commitment (The 1st year serving as the co-chair followed the 2nd year as the chair.)	The co-chair work tightly together with the chair to set the annual goals of SISPE and to make plans for all events through the year.
Career development and opportunity lead	ISPE student member; 1-year commitment	Focusses on meeting the interests of SISPE member with regards to career development & career opportunities. Will establish & foster collaboration with the academic, government/regulatory and industry/ service provider council and other professional organizations (e.g., ISPOR) to organize events regarding career development and to provide career opportunities.
Educational / academic lead	ISPE student member; 1-year commitment	Focusses on meeting the interests of SISPE member with regards to educational content. Will establish & foster collaboration with the academic council / education committee to organize educational activities such as webinars and workshops.
Networking & communication lead	ISPE student member; 1-year commitment	Focusses on meeting the interests of SISPE member with regards to collaborations & networking with peers, as well as to maintain an active social media profile, and to ensure communication across SISPE is working smoothly. Will establish & foster collaboration with the P&CC committee and social media subcommittee. This position will also include organization of social events of SISPE, especially at the conference.

STUDENT CALENDAR

The student council is planning to create a student calendar corner for sharing and advertising important events of the ISPE and SISPE. All student chapters are welcome to provide information of cross-chapter activities to the student council and we will help you promoting the event. Contact us through email portal: sispechair@gmail.com

THE 2ND PHASE SURVEY OF THE SISPE 5-YEAR AGENDA

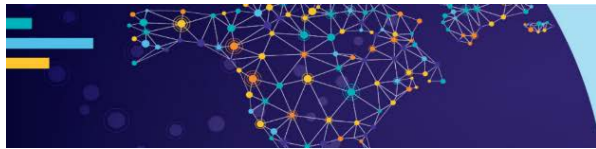


The student council has completed the second survey of SISPEs 5-year Agenda in this spring. The aim of this survey was to assess the relevance of identified needs, interests, and action items for SISPE members. This information is currently used to finalize the 5-year agenda for SISPE, which will be used to promote and meet SISPE member needs in the future.

We had received a total of 60 complete responses, and geographic regions of respondents was mirroring ISPEs general distribution across regions. Respondents included 82% doctoral students, 4% post-docs and 4% graduate and undergraduate students. More than 75 % of the respondents were interested in **events that focus on career pathways in pharmacoepidemiology**, this included workshops on job applications and networking with potential employers. In alignment with student members' interests, the student council worked together with other members from the scientific mid-year committee, under leadership from Dr. Winterstein, to organize a newly designed mid-year meeting in April. This conference put special focus on activities relevant to career planning, including job talks sessions and a career fair. Feedbacks collected from attendees were extremely positive, and ISPE is currently considering efforts to continue this format!

More than 70 % of the survey respondents indicated they were definitely or likely interested in **opportunities that enhance networking between students/trainees**. Students would like to participate in events such as workshops where SISPE members present/ teach methods in Pharmacoepidemiology to other SISPE members, cross-chapter research days/seminars, or collaborations with other societies (e.g., SER or ISPOR). In alignment to this interest, the student council has collaborated with the ISPE academic council and created a series of webinars covering topics of immeasurable time bias, social media for career advancement and pregnancy research in pharmacoepidemiology. Recordings of all webinars will be available to student members at the educational resource webpage of ISPE.





2022 VIRTUAL MID-YEAR MEETING

pharmacoepi.org | #ispemy22 | @IntPharmacoEpi



SPECIAL REPORT OF 2022 MID-YEAR MEETING

Under the theme of “Presenting the Next Generation of Pharmacoepidemiologists”, this year’s Mid-year meeting was completely remodeled and successfully hosted in April. From the meeting, we learned how trainees can prepare for the job market and how trainees can prepare to meet requirements for pharmacoepidemiology in the next decade.

The idea behind the new ‘**Job Talks**’ session was to take job-seeking students/trainees and to put them on the fast track towards their dream job, which was especially tailored towards senior students. Job Talks provided a stage for students and young trainees to introduce themselves as a pharmacoepidemiologist. Students who applied and had been accepted for this session were asked to share their research interests and experience, expertise, and career goals to all attendees and potential employers. This session provided a great opportunity for job-seeking students to promote themselves and to be matched to their dream jobs!



On the other hand, the **career fair** attracted potential employers looking to hire new talents, as well as students & trainees looking for being hired. Attendees were encouraged to talk to potential employers to network and get to know more about offered positions. Not only senior students, but also junior students benefited from this event. The latter by networking, and by better understanding required skillsets to succeed on the job market.

Besides the new Job Talks and Career Fair sessions, this year’s mid-year meeting also delivered several great talks on **what a well-trained pharmacoepidemiologist should look like in 2030**, how you could present your research in a TED-style talk, and the do’s and don’ts in landing the perfect position in pharmacoepidemiology. These wonderful presentations covered the content of all core abilities required for future pharmacoepidemiologists, including the analytical and statistical skills, project management, communication skills and teamwork. In addition, during the student social event, we hosted young professionals working at different sectors (academic, industrial, and regulatory) to share their experiences and lessons learnt after entering their career paths. Many thanks again to Dr. Vivian Wang, Dr. Xi Wang, and Dr. Yasser Albogami for serving as speakers for this event.

If you missed out on some of these great events from the 2022 mid-year meeting, make sure to check out the recording. As a registered student member, you can still access the recorded talks from the ISPE 2022 mid-year meeting webpage (<https://www.eventscribe.net/2022/ISPEMY/>)! Enjoy and sharing your learning with us anytime!

WELCOME NEW CHAPTERS OF 2021-2022

CHINA PHARMACEUTICAL UNIVERSITY (CPU) ISPE STUDENT CHAPTER

Board: Yue Xiao (President; shawnjames@163.com), Yinan Ren (Vice-President; 3220040590@stu.cpu.edu.cn), Yanfei Chen (Secretary; 3321041166@stu.cpu.edu.cn), Feng Jiang (Treasurer; 3321041170@stu.cpu.edu.cn)

CHAPTER ACTIVITIES/ INFORMATION

The ISPE CPU student chapter was formally established in September 2021 and was the first ISPE student chapter in the mainland China. Currently the ISPE CPU chapter has 13 members, which are from the areas of Pharmacy, Pharmacoeconomics, Public Health and Pharmacoepidemiology programs at CPU. The chapter intends to impart deep insights into the field of Pharmacoepidemiology by holding postgraduate academic seminars, inviting academicians and representatives from pharmaceutical industry for academic knowledge sharing. By now, we have successfully held five lectures of both online and offline format on topics such as Pharmacoepi methodology sessions, career orientation, interview & Q&A with past graduates and literature review tips. At the same time, we also hold a weekly journal club session that focuses on articles on pharmacoepidemiology, which is open to all undergraduate and graduate students who are interested in the field. With the active support of the university and faculty advisor, the members have made great progress in independent thinking, presenting and slide preparation skills.

CHAPTER NEWS/ UPDATES/ EVENTS

2021 September

CPU.ISPE student chapter officially established, with associate professor Jifang Zhou as the faculty advisor, graduate student Yue Xiao as the president, graduate student Yinan Ren as the vice president, graduate student Yanfei Chen as the secretary, and graduate student Feng Jiang as the treasurer.



2021 October

The WeChat public account of CPU.ISPE student chapter was officially put into use, responsible for pushing some relating articles and methodology. (WeChat Official Account, a Twitter-like Chinese Social Networking Services Community)



2021 November

The first online and offline academic lecture “The generation and application of pharmacoeconomic evidence” presented by Han Sheng (Researcher at Peking University) was successfully held.



2021 December

The academic lecture “Application of epidemiological methods in post-marketing drug safety re-evaluation” presented by Shaowen Tang (Professor, Department of Epidemiology, Nanjing Medical University) was successfully held.



2021 December

The academic lecture “A new direction for global health security governance” presented by Kun Tang (Associate Professor, School of Public Health and Wellness, Tsinghua University) was successfully held.



2022 January

The academic lecture “Research on the social governance system in major public health emergencies” presented by Xiaolin Xu (Professor, School of Public Administration, Huazhong University of Science and Technology) was successfully held.



2022 February

The CPU.ISPE student chapter management team and the instructor went to Lanzhou University to visit Professor Yaolong Chen's team, conducted in-depth exchanges on evidence-based medicine.



2022 March

The first career planning seminar presented by Yu Lou (Vice President of Takeda Greater China) was successfully held.



2022 April

The video sharing salon “Future-oriented pharmacoepidemiology researcher” (clips from the 2022 ISPE VIRTUAL MID-YEAR MEETING) was successfully held.



Since 2022 March, we have successfully held eight weekly postgraduate literature sharing sessions and post thirteen public account tweet.

论文研讨安排	讲者								
3月17日	周吉芳	Association of Computed Tomographic Screening Promotion With Lung Cancer Overdiagnosis Among Asian Women							
	周吉芳	The MedSafer Study—Electronic Decision Support for Deprescribing in Hospitalized Older Adults A Cluster Randomized Clinical Trial							
3月24日	黄睿健	Association of Type of Oral Anticoagulant Dispensed With Adverse Clinical Outcomes in Patients Extending Anticoagulation Therapy Beyond 90 Days After Hospitalization for Venous Thromboembolism							
	陈彦妃	Hospitals with higher volumes of emergency general surgery patients achieve lower mortality rates: A case for establishing designated centers for emergency general surgery							
3月31日	蒋峰	Association of Apolipoprotein B-Containing Lipoproteins and Risk of Myocardial Infarction in Individuals With and Without Atherosclerosis							
	肖越	Center-Level Variation in Transplant Rates Following the Heart Allocation Policy Change							
4月7日	徐菁昀	Myocarditis Cases Reported After mRNA-Based COVID-19 Vaccination in the US From December 2020 to August 2021							
	卓耘菁	Association of COVID-19 Vaccination in Pregnancy With Adverse Peripartum Outcomes							
4月14日	黄睿健	Association of Echocardiographic Measures of Left Atrial Function and Size With Incident Dementia							
	陈彦妃	Association Between 2-Dose vs 3-Dose Hepatitis B Vaccine and Acute Myocardial Infarction							
4月21日	蒋峰	Effect of Alirocumab Added to High-Intensity Statin Therapy on Coronary Atherosclerosis in Patients With Acute Myocardial Infarction							
	肖越	Childhood Cardiovascular Risk Factors and Adult Cardiovascular Events							
4月28日	黄睿健	Atrial Fibrillation is Associated With Greater Risk of Dementia in Older Veterans							
	陈彦妃	Lipoprotein(a) and Benefit of PCSK9 Inhibition in Patients With Nominally Controlled LDL Cholesterol							
5月5日	蒋峰	Propensity-Matched Comparison of the Ross Procedure and Prosthetic Aortic Valve Replacement in Adults							
	肖越	Incidence and Survival of Aortic Dissection in Urban China: Results from the National Insurance Claims for Epidemiological Research (NICER) Study							

PRELIMINARY OBJECTIVES/ ACTIONS/ TARGET DATES FOR 2022

Since the establishment in September last year, the management has always adhered to the policy of promoting pharmacoepidemiology and bringing cutting-edge academic knowledge to members. A variety of activities such as academic exchanges, video sharing salons, career planning, etc. have been successfully held, and the number of members has grown from 4 to 40 today. 2021 is the first year for the CPU.ISPE student chapter to build fundamental relationships with internal and external stakeholders. Faced with the difficulty that posed by the ongoing COVID-19 pandemic, we still persevered and will do our best to serve our students, so I firmly believe that 2022 will be even better.

First of all, in 2022, we will continue to take expanding influence of ISPE as our action policy, and insist on weekly postgraduate literature sharing session and monthly academic lectures;

Secondly, we should actively seek opportunities for all parties in society to provide members with broader vision and employment opportunities.

Specific goals can be listed as follows:

- 1) By the end of 2022, the number of followers of the WeChat public account will reach 100;
- 2) Maintain monthly academic lectures and try to include international Pharmacoepi researchers.
- 3) Continuation of weekly journal clubs for graduate students to discuss updates in literature and for sharing their work;
- 4) Actively communicate with enterprises, governments and hospitals, seek internship positions, and provide internship positions for at least 5 members;
- 5) Complete the handover process of the next management term.

SUGGESTIONS

We look forward to a great collaboration with ISPE and the expanding global network of ISPE's chapters (Regional and Student) to advance in the field of pharmacoepidemiology.

We hope to connect with other ISPE student chapter leaders from the Asian-Pacific area.

RUTGERS UNIVERSITY ISPE STUDENT CHAPTER

Board: Mackenzie Henderson (President; mhenderson@dsi.com), Eric Wang (Vice-President; ewang@dsi.com), Priyanka Yalamanchili (Secretary; pyalamanchi@dsi.com), Sneha Gaitonde (Project Chair; sneha.gaitonde@rutgers.edu)

CHAPTER ACTIVITIES/ INFORMATION

Introductory Meeting: Introduced the new student chapter and outlined events for the remainder of the year; promoted ISPE conferences.

Career Panel: Interview of PE experts across multiple functions including academia, industry, and consulting. We had an interactive portion where students could ask questions.

Networking Event: Invited members of other ISPE Student Chapters to a networking event during which we split the group up into several small breakout rooms to have 1 on 1 discussions to get to know each other, discuss academic and career goals, and any other topics of interest.

Debunked Series #1 - Vaccine Misinformation: Held the first event in a series we are calling “Debunked,” in which we discuss public health topics that are commonly misunderstood. The first event in the series was a webinar regarding the impact of vaccine misinformation and the ways in which pharmacoepidemiologists can engage with vaccine safety studies, including methodology of study design

Drug Development Webinar: An overview of drug development in the pharmaceutical industry with an emphasis on how pharmacoepidemiologists can impact a drug’s life cycle.

Social Event - Happy Hour: We held an in-person social event to get to know the members of our chapter better and discuss upcoming events for our student chapter.

Outreach initiatives: Over the course of the year, we established contact with three other ISPE student chapters: UPenn, UMB, and University of Florida. We were able to invite these chapters to some of our events and they reciprocated.

CHAPTER NEWS/ UPDATES/ EVENTS

Debunked #2

We are currently planning an upcoming event in our “Debunked” series, in which we will discuss public health topics that have been highly publicized in the media that are often misunderstood, and the role that pharmacoepidemiologists can play in addressing some common misconceptions about them. The broad topic for the second event in this series is the opioid epidemic in the United States. We do not have a specific date and time for this event yet, but we will provide more detailed information about it once we do.

Networking Event

Our members greatly enjoyed networking with other ISPE student chapter members this year, and we would like to give them and any new members the opportunity to form these professional and personal connections again. We would love to include more chapters in this endeavor, as well as any other student members who are interested. We do not have a specific date for this event, but it will occur in the Fall/Winter term of the academic year, as we will want to include any incoming students in this event.

Career Panel #2

Since our first career panel was successful, we would like to hold another one using some new panel members to offer our members more opportunities to learn about careers in pharmacoepidemiology. The structure will likely be similar to our first career panel, with questions prepared ahead of time for the panelists as well as opportunities for students to ask their own questions.

PRELIMINARY OBJECTIVES/ACTIONS/TARGET DATES FOR 2022

Our goals for the coming year are to increase membership in our student chapter and increase outreach to other chapters. Since this was the first year of our student chapter, we reached out to various points of contacts within Rutgers University so that we could increase our visibility. We hope

to expand on this method and reach out to more students in order to increase membership. We also hope to increase outreach to other chapters and promote combined events in order to develop further connections with members from other chapters.

SUGGESTIONS

It would be useful for new chapters to have a contact email for each of the various student chapters so that we can connect and collaborate on future events. Additionally, something that would be helpful for new and existing student chapters is a central repository of all student chapter related forms and deadlines, possibly on the ISPE website. This would ensure that all student chapters stay abreast of all information that could potentially affect them.

THE DUTCH ISPE STUDENT CHAPTER

Board: Melissa Leung (President; m.w.y.leung@uu.nl), Taichi Ochi (Vice-President; t.ochi@rug.nl), David Liang (Secretary; d.liang@uu.nl), and Ajda Bedene (Treasurer; A.Bedene@lumc.nl).

CHAPTER ACTIVITIES/ INFORMATION

During the formation of the student chapter, the main activities were focused on establishing the student chapter. Initially, we reached out to the different universities in the Netherlands with a pharmacoepidemiology program and PhD students who studied pharmacoepidemiology.

Through virtual meetings with all member universities that wanted to join the Dutch ISPE Student Chapter, the aims and activities of the student chapter were agreed upon and established. The officers were appointed for this academic year and the submission of the application was completed.

In the current iteration of the Dutch Student Chapter, 5 universities have joined us (Erasmus Medical Center, Leiden University Medical Center, Maastricht University Medical Centre+, University of Groningen, Utrecht University), consisting of 16 members. The permanent position of

the Student Chapter lies at Utrecht University in the Division of Pharmacoepidemiology & Clinical Pharmacology.

We have three faculty advisors, one from each of the student chapter officer's universities. These three advisors are Associate Professor Helga Gardarsdottir (Utrecht University), Professor Eelko Hak (University of Groningen), and Professor Rolf H.H. Groenwold (Leiden University Medical Center). The officers in the Student Chapter are Melissa Leung (president), Taichi Ochi (vice president), David Liang (secretary), and Ajda Bedene (treasurer). Our aim is to connect pharmacoepidemiology PhD students in the Netherlands to strengthen our collaboration.

CHAPTER NEWS/ UPDATES/ EVENTS

The Dutch ISPE Student Chapter is a new ISPE Student Chapter under formation. We saw that currently among the existing student chapters in The International Society for Pharmacoepidemiology, only two were in Europe. Thus, we saw an opportunity to expand the network of young pharmacoepidemiologists in the Netherlands. Within the Netherlands, the different institutions have access to robust data, and further, also expertise in designing various observational studies in the field of pharmacoepidemiology. This not only poses an excellent opportunity to learn from each other but also an opportunity for collaboration. With the creation of the Dutch ISPE Student Chapter, we thus hope to bring together and connect pharmacoepidemiology students and research institutions in the Netherlands, with their counterparts in Europe, and ultimately facilitate connections worldwide. Currently, as we are still new and under formation, we have not yet met outside of a virtual environment. Hopefully in the future we will be able to attend both the Annual Dutch Epidemiological Conference (WEON 2022) and the 38th International Conference on Pharmacoepidemiology and Therapeutic Risk Management (ICPE 2022).

Finally, if you are from a Dutch University and would like to join our student chapter, feel free to reach out to any of us!

NEWS FROM STUDENT CHAPTERS

JOHNS HOPKINS UNIVERSITY ISPE STUDENT CHAPTER

Board: Jamie Heyward (Co-President; jheywar1@jhu.edu), Yunwen Xu (Co-President; yunwen.xu@jhu.edu), Corey Joseph (Journal Club Coordinator; cjoseph9@jhu.edu)

CHAPTER ACTIVITIES/ INFORMATION

Journal Club: Beginning last year, SISPE began sponsoring a monthly Pharmacoepidemiology Journal Club for current trainees to read and discuss current pharmacoepidemiology literature, with a focus on important clinical question, novel methods and datasets.

CDSE Seminar Series: We co-sponsor, along with the Johns Hopkins Center for Drug Safety and Effectiveness (CDSE), the 2021-2022 CDSE "Safety, Value and Innovation" Seminar Series (once-monthly, Sept 2021-May 2022), which features visiting speakers who represent thought leadership and excellence from across academia, regulatory and industry.

Professional Mentoring: In conjunction with the CDSE Seminar Series we organize small mentoring sessions with visiting speakers and JHU students.

FDA Pharmacovigilance Lecture: We sponsored and hosted the 2022 FDA Annual Pharmacovigilance Lecture in coordination with the JHSPH Department of Epidemiology's "Current Topics in Epidemiology" Lecture Series, which had 170 attendees on Zoom (details below):

Date/Time:

Friday, January 28th at 12:15-1:20pm.

Speaker:

Scott Janiczak, PharmD, BCPS

Safety Evaluator ; LCDR, U.S. Public Health Service; Center for Drug Evaluation and Research; Office of Surveillance and Epidemiology; Division of Pharmacovigilance I

U.S. Food and Drug Administration

Title:

Introduction to Postmarketing Drug Safety Surveillance: Pharmacovigilance at the U.S. Food and Drug Administration, Center for Drug Evaluation and Research

Communications: We send bimonthly emails to our 106-person listserv consisting of upcoming pharmacoepidemiology lectures, journal clubs, ISPE-related lectures, conferences, internships, and other related networking and training opportunities.

CHAPTER NEWS/ UPDATES

Elections

Following a recruitment drive coordinated by the outgoing JHU SISPE Leadership in May 2022, we formed a new executive committee, consisting of Co-Presidents Corey Joseph (3rd Year PhD Student) and Aster Meche (2nd Year PhD Student), Grace Gahlon (2nd year PhD student, position TBD), Hana Kim (2nd year Masters student, position TBD), and Jamie Heyward (3rd year PhD student, position TBD). Information about pharmacoepidemiology trainees, including SISPE leadership, can be found [here](#).

Pharmacoepidemiology Journal Club

The most recent journal club was held virtually on Monday, February 21, 2022. We discussed the paper "Clinical Outcomes After Intensifying Antihypertensive Medication Regimens Among Older Adults at Hospital Discharge" by Anderson TS et al. doi: 10.1001/jamainternmed.2019.3007

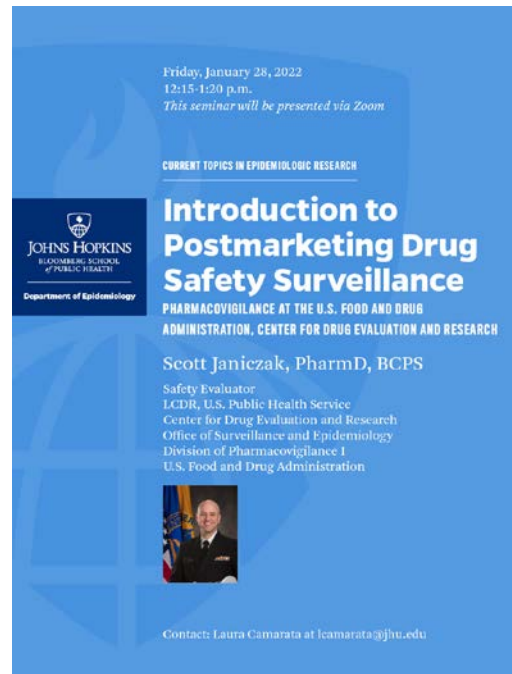
Virtual Pharmacoepidemiology Seminar and Mentoring Session

On Monday, February 14th, 2022, we hosted Dr. Gerald Dal Pan, the Director of FDA's Office of Surveillance and Epidemiology, who gave a talk titled "Real-world Data, Advanced Analytics, and the Evolution of Postmarket Drug Safety Surveillance". A recording of that talk, and other past seminars, can be found [here](#).

We held a virtual mentoring session with Dr. Dal Pan and pharmacoepidemiology trainees following the talk.

Special Pharmacovigilance Lecture

On January 28, 2022, we sponsored the 2022 FDA Annual Pharmacovigilance Lecture in conjunction with the Department of Epidemiology, which featured Dr. Scott Janiczak, Safety Evaluator with FDA's Office of Surveillance and Epidemiology.



Conferences

Johns Hopkins SISPE members will be in attendance at the ICPE Annual Meeting in Copenhagen, Denmark on August 24-28, 2022.

Resumption of In-Person Activities

We are excited for the return of in-person activities, which will permit the resumption of several yearly events that had been on 2-year hiatus due to COVID- including a “field trip” to the FDA with the University of Maryland SISPE Chapter, a Pharmacoepidemiology Career Panel, and attendance at the ICPE Annual Meeting in Copenhagen, Denmark in August 2022.

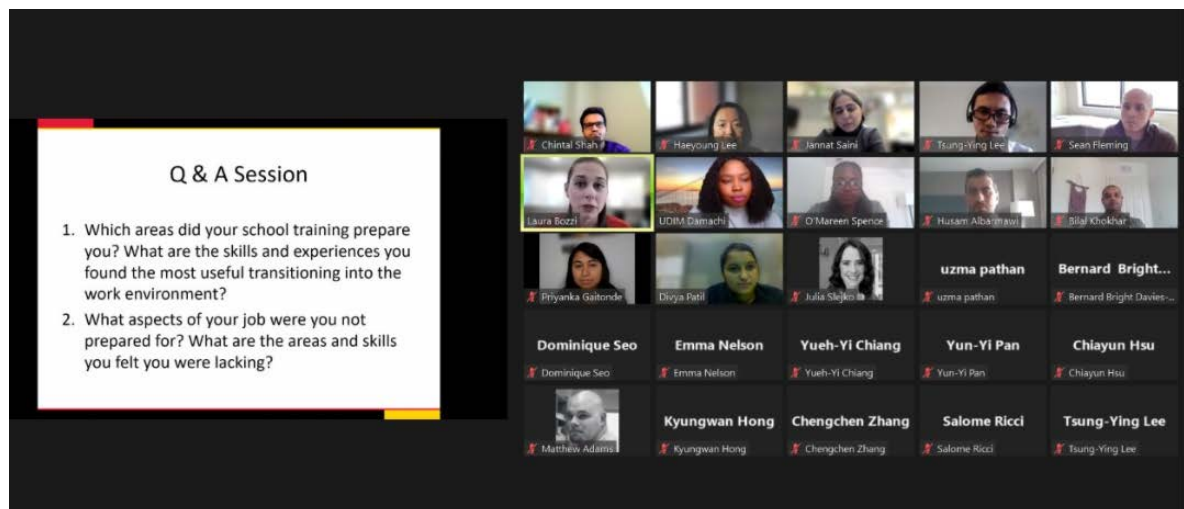
UNIVERSITY OF MARYLAND, BALTIMORE (UMB) ISPE STUDENT CHAPTER

Board: Haeyoung Lee (President; haeyoung.lee@umaryland.edu), Udim Damachi (Vice-President; udamachi@umaryland.edu), Pari Patel (Secretary; paripatel@umaryland.edu), Jennifer Contreras (Treasurer; jcontreras@umaryland.edu)

CHAPTER ACTIVITIES/ INFORMATION

ISPE/ISPOR Alumni Career Experience Seminar, December 3rd, 2021

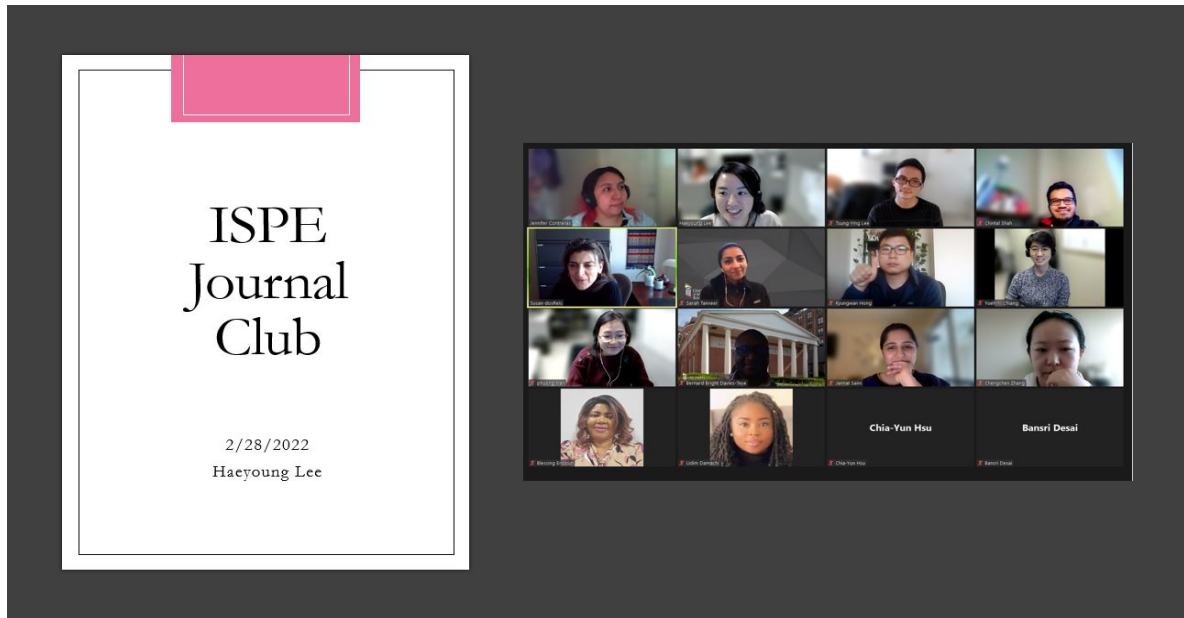
The UMB ISPE Chapter collaborated with the UMB ISPOR Chapter to organize a virtual alumni career experience seminar. This was aimed at learning about alumni post-graduation career experiences, which included roles, typical tasks, as well as responsibilities in day-to-day work. We invited 5 recent graduates working in industry to help students recognize transferable skills and potential gaps between school training and job requirements. This event was well received and had over 30 attendees.



Monthly Virtual Journal Club, Spring semester, 2022

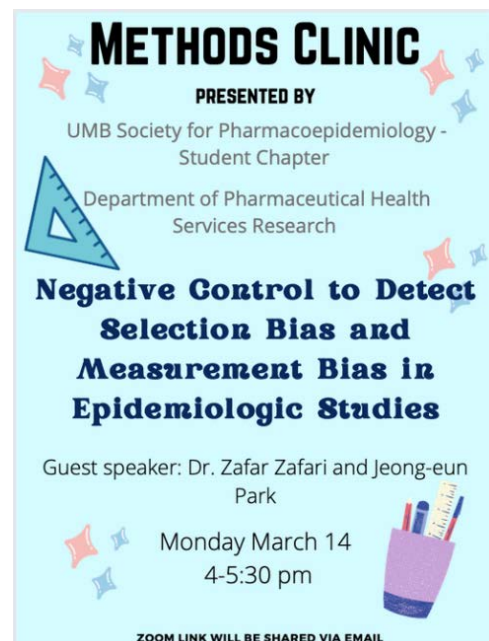
One of our main goals for this academic year is to hold regular, interactive journal clubs. We were successful in starting this endeavor. In 2022, our chapter held its virtual journal club in February. Our journal club series is aimed at gaining knowledge of novel peer-reviewed literature relevant to the field of pharmacoepidemiology, developing and improving critical literature appraisal skills, and generating ideas for future research. Our journal moderator and presenter led a fascinating discussion on the literature and proposed methods for analyzing

pharmacoepidemiological methods around unmeasured confounders and time-series analysis. Overall, the journal club meeting was interactive and informative; we had 15 attendees for this journal club.



(Upcoming) Virtual Methods Clinic, March 14th, 2022

Our Chapter holds an annual methods clinic event, with the aims of: 1) introducing novel methods in pharmacoepidemiology to students and faculty, and 2) encouraging interdisciplinary discussion on this topic. This is a student-led, journal-club-style event in which students and a special guest discuss emerging methodologic approaches in pharmacoepidemiology based on a selected recent article. Our topic this semester is on "negative controls". On March 14th, our student lead will present on "Negative Controls to Detect Selection Bias and Measurement Bias in Epidemiologic Studies" by Arnold et al. We will then have our faculty member and presenter –both having expertise in this topic– discuss using such methods in their own research.



Social activities

(Upcoming) Spring Bake Sale, April 26th, 2022

We plan to hold a fun fundraising and social event, "Spring Bake Sale" in-person as restrictions on food at events have recently been lifted. For this event, faculty, staff, and students from our department can volunteer to bake home desserts from their home countries or supply the baked items so that we can try desserts from different countries. We will be selling the baked goods alongside refreshing drinks such as lemonade. We will hold a silent auction of larger baked goods to maximize our funds. The tentative date for this event is 26th of April.

CHAPTER NEWS/ UPDATES

The first in-person event following the COVID-19 Pandemic

The first in-person event following the COVID-19 Pandemic as food restrictions at events were lifted in March 2022, we decided to hold an in-person social event called "Spring Bake Sale" after more than two years of virtual events. The UMB Student Chapter will do everything possible not only to hold a more interactive, fun in-person event, but also to ensure that this event is held safely and in accordance with current school policy.

Participating in and attending the 38th ICPE Meeting

Many student chapter members plan to attend the ICPE Annual Meeting in Copenhagen, Denmark, and have submitted abstracts for presentation at the meeting. The high attendance at the national meeting will provide students with the opportunity to gain more in-depth training in pharmacoepidemiology methodologies.

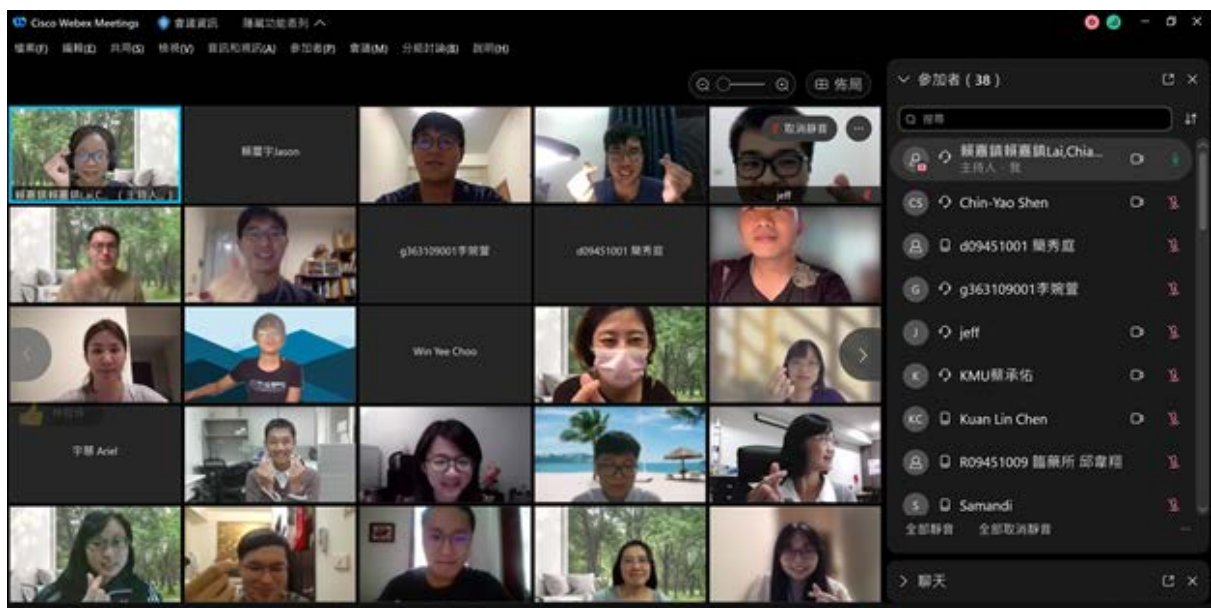
NATIONAL CHENG KUNG UNIVERSITY (NCKU) ISPE STUDENT CHAPTER

Board: Daniel Hsiang-Te Tsai (President; danielhttsai@gmail.com), Hsuan-Yu Su (Vice-President; sudontpo@gmail.com), Nai-Yu Chen (Secretary; nychen3387@gmail.com), Steven Chin-Yao Shen (Treasurer; steven_shen0507@hotmail.com)

CHAPTER ACTIVITIES/ INFORMATION

Tea & CrêPE Reading Club

Since last autumn, we've been organising the Taiwan's Easy and relaxing reading club for Assembling the CrCross-school students Enthusing about PharmacoEpidemiology (Tea & CrêPE). We are keen to motivate everyone to be interested in pharmacoepidemiology. Therefore, we applied the thirty must-read articles demonstrated by Dr. Anton Pottegård¹. With compassion and experience, senior PhD students guided newcomers. In terms of our strategy, we've previously talked about the section on basic methodology and biases. Furthermore, we used self-reported outcome to analyze the feedback from the attendees. We demonstrated that the reading club is beneficial to development of young researchers' interests and knowledge. Finally, many thanks to the group listing these papers and we hope that this will be able to help students in Taiwan enhance their research abilities.



Pharmacoepidemiology program

We invite international/domestic scholars to give a talk in our pharmacoepidemiology course each semester. During the last semester, these topics included vaccine safety, data-driven policy, drug utilization pattern analysis, new-user design, translational study. Moreover, we organised a poster competition for junior students by conducting systematic review. Senior students and other experts were invited to give their comments. Through various courses and practical practice, we look forward to learning more research methods in pharmacoepidemiology and could apply them in future research.



Field Trip – Taroko Gorge

Due to the well control of COVID-19 pandemic in Taiwan, we could have the field trip to Taroko Gorge, which is famous for its natural marble landscape, for promoting the relation between Chapter members and advisors. Under the marvelous natural environment with relaxing mind, we set up the goal of running the student chapter in this year and planed the student activities in 2022 ACPE in Taiwan.



CHAPTER NEWS/ UPDATES

We are thrilled to announce that National Cheng Kung University (NCKU) will host the 14th Asian Conference on Pharmacoepidemiology (ACPE 2022). Pre-conference educational seminars, intriguing plenary talks on important subjects, symposia highlighting essential scientific methodologies and approaches, oral abstract sessions, and poster presentations are among the features of this year's programme. Taiwan has been known as Formosa, the island of beauty since 17th century. In addition, Tainan, the host city for this conference, is presently known as Taiwan's cultural and educational capital. It would be fantastic to have all our friends assemble here. We look forward to seeing you in Tainan in October 2022.

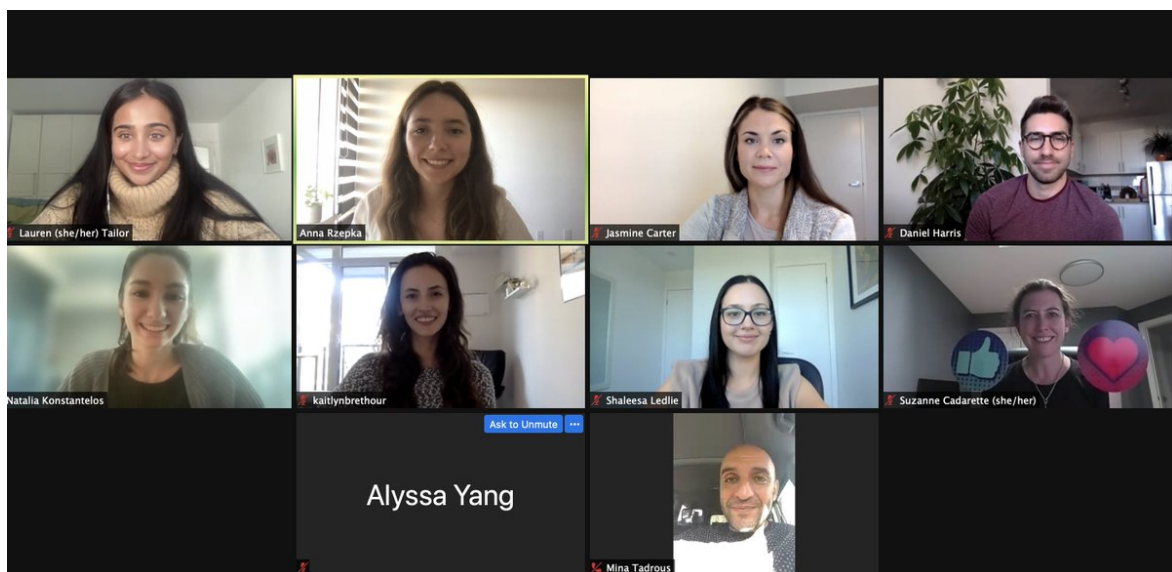
UNIVERSITY OF TORONTO ISPE STUDENT CHAPTER

CHAPTER ACTIVITIES/ INFORMATION

SISPE U of T started the year with our annual general meeting and elections. Most of our members this year were new to pharmacoepidemiology, so we tailored our events to help students familiarize themselves with the field and their research projects. We hosted an Introduction to Pharmacoepidemiology lecture in November 2021 (led by our board members), followed by national scholarship application reviews in December 2021. Our scholarship review initiative was particularly well received, with students appreciating the opportunity to have their scholarship applications reviewed by previous winners. Most recently, we held a journal club in February 2022 discussing misclassification in administrative claims research.

CHAPTER NEWS/ UPDATES

We are excited for in-person activities this spring at the University of Toronto! We hope to host in-person events before the end of the semester, including a long awaited SISPE social. Several of our members have also submitted abstracts for ICPE 2022, and we look forward to meeting with other chapters in Denmark at the end of August!



SISPE U of T elections and annual general meeting (November 2021)



SISPE U of T Journal club (February 2022)

UNIVERSITY OF FLORIDA ISPE STUDENT CHAPTER

Board: Phuong “Phoenix” Tan Tran (President; phuong.tran@ufl.edu), Earl Morris (Vice-President; earl.morris@ufl.edu), Pilar Hernández Con (Secretary; hernandezcon.mpi@ufl.edu), Nistha Shrestha (Treasurer; nisthashrestha@ufl.edu), Inyoung Jun (Epidemiology Liaison; inyoungjun@ufl.edu), Yanning Wang (Health Outcomes and Bioinformatics Liaison; ynwang@ufl.edu)

CHAPTER ACTIVITIES/ INFORMATION

Our chapter held a mixture of online and hybrid meetings and events this year. We observed increased attendance in-person as students are gradually attending in-person classes. We kicked off the academic year of 2021-2022 by a general meeting held online through Zoom. We had increased attendance from the Department of Epidemiology and Health Outcomes and Biomedical Information (HOBI) students. Along with collaboration within UF, we continued our collaboration with UPenn, where career talk chapter events were open to students from both chapters.

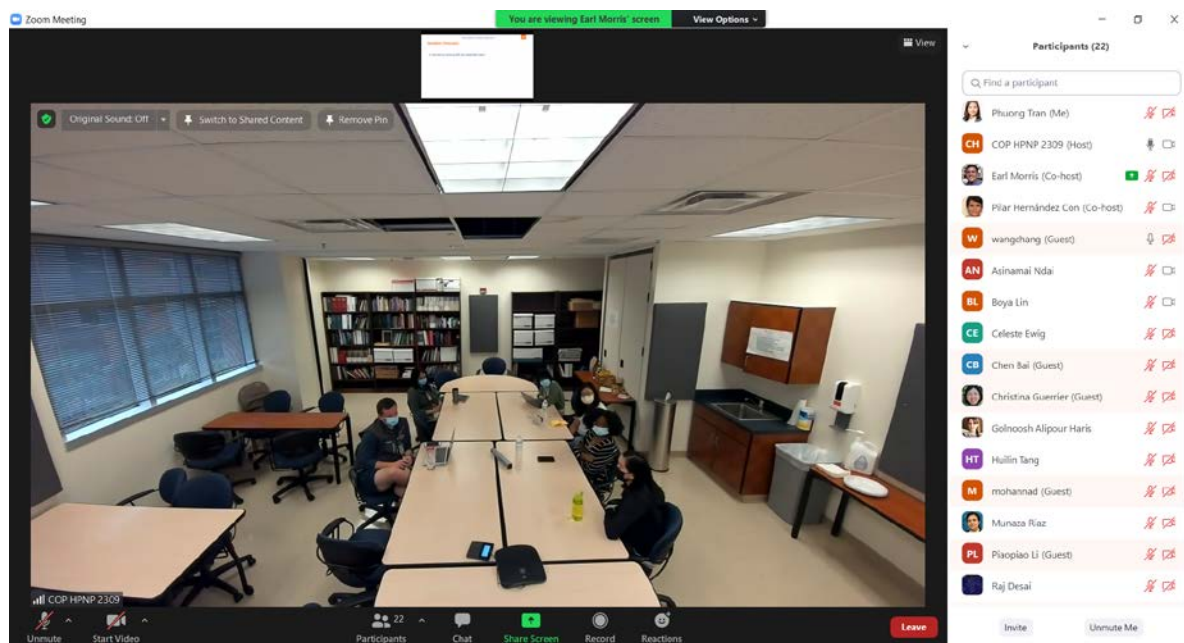
Our events this year focused on career development, PhD navigation, and data skills related to the field. We started with getting feedback and discussing with current members their interests and what activities they would like to participate in. We also funded 15 students to attend ICPE All

Access 2021. This was offered to all members of our student chapter at UF who needed financial support.

Our chapter successfully conducted the following activities as hybrid events:

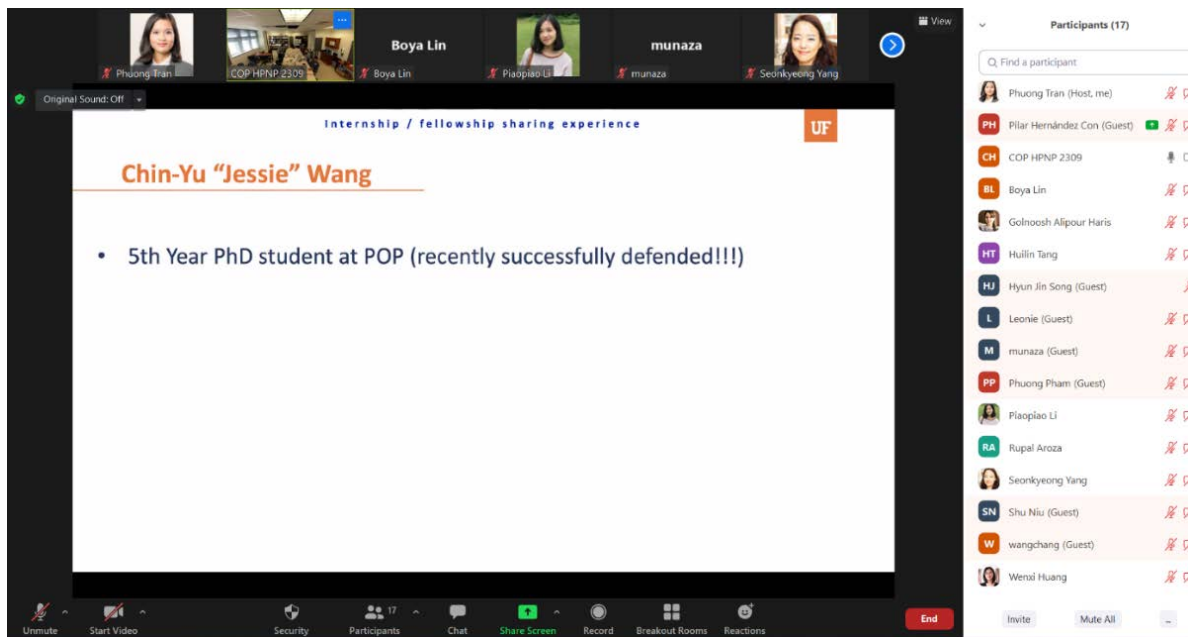
Dissertation sharing event:

This event was conducted as a panel discussion with senior students from the department of POP and HOBI. We organized this event to discuss the dissertation process and possible challenges and opportunities. We had attendance from students across the department of Epidemiology, HOBI, and POP.



Internship sharing event:

This event was conducted as a panel discussion where senior students from POP shared their internship experiences in the pharmaceutical industry. We opened the discussion to students after for questions regarding preparation, application, and description of industry internships.



Marketscan workshop:

This event was conducted successfully to give an overview, tips, and opportunities to use MarketScan data. As always, we opened the discussion for questions and participants were excited to learn and engage in honing their data analysis skills.



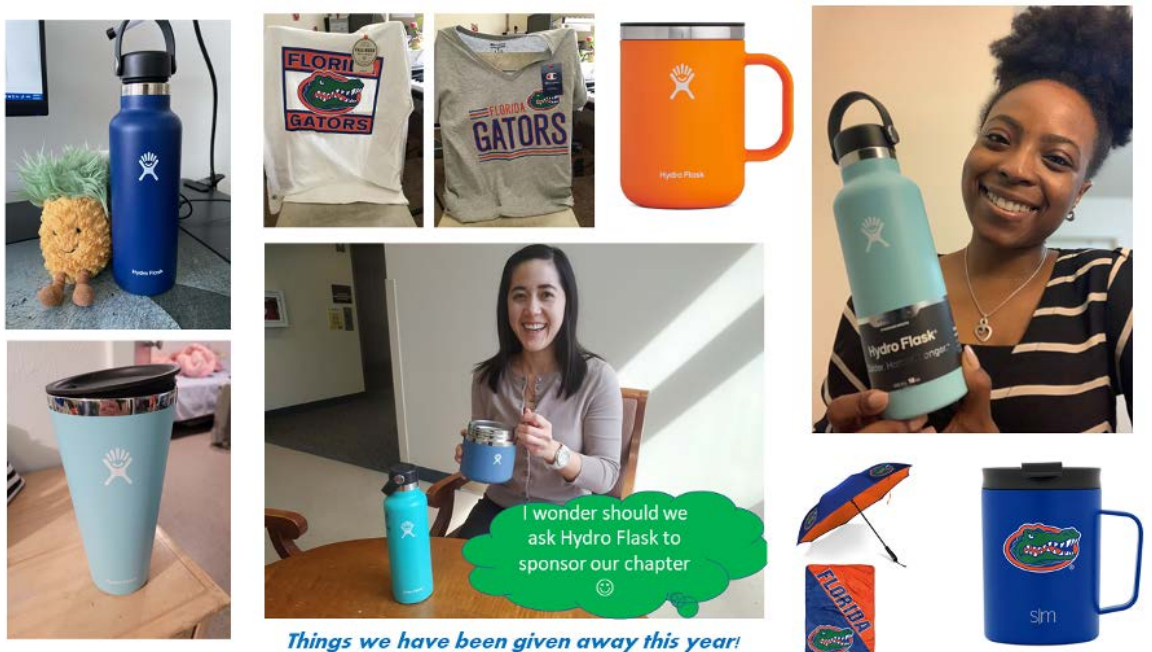
The following events are currently underway:

- Career sharing event: This event is being organized to collaborate with UF's ISPOR student chapter. We plan to invite esteemed speakers from Academia (Dr. Sean Hennessy UPenn, Dr. Almut Winterstein - UF, Dr. Marina Sirota - UCSF) and Industry (Dr. Michael Taylor - Genentech, Dr. Yoonyoung Choi - Merck) to have a panel discussion to help students envision and prepare for their future career. We will also share this activity with UPenn Student Chapter to strengthen our collaboration.

- Read-Refute-Reward: We organized this as an ongoing event to encourage students to exercise their critical thinking and challenge any interesting scientific articles in the form of "Letter to Editor."
- Team building: An outdoor activity to connect members through boating, sports and fun games.

COVID-19 & Student Chapter

This year we gradually eased restrictions with hybrid events. We organized hybrid events to connect with students who were comfortable attending in-person events and students who wished to use Zoom. We sought additional funding (besides ISPE) to give as many rewards as possible to incentivize students to join our activities and ensure we always had plenty of food. Extra funding also helped us organize a big symposium where we can invite leaders in our field to come, speak, and give instant feedback to our students' resumes and mock interviews.



UNIVERSITY OF ILLINOIS AT CHICAGO ISPE STUDENT CHAPTER

Broad: Claire Huang (President; hhuang80@uic.edu), Jyotirmoy Sarker (Vice-President; jsarke3@uic.edu), Victoria Kulbokas (Secretary; vkulbo2@uic.edu), Monika Mandava (Treasurer; mmanda6@uic.edu)


CHAPTER ACTIVITIES/ INFORMATION

Since September 2021, the UIC ISPE-SC hosted a series of five events, including one in-person social event. Our events ranged from panel talks with PhD and PharmD/MPH students to discussions on available library and writing resources at UIC. In the beginning of the academic year, we hosted an in-person social event to welcome back new and retiring chapter members (see picture). As students at UIC are transitioning to in-person learning this semester after an extended period of virtual education, ISPE-SC is collaborating with ISPOR Student Chapter to reward our chapter members with insulated coffee mugs. We plan to distribute the coffee mugs at the end of the academic year. ISPE-SE also plans to host two more virtual events, including a job search talk and an alumni panel event.



CHAPTER NEWS/ UPDATES

As the pandemic continues, the attendance at conferences still remains virtual. We have awarded an ISPE-SC winner at UIC College of Pharmacy Research Day to promote ISPE Student Board and recognize pharmacoepidemiology research among ISPE chapter members.

ISPE Student Chapter Choice Award	1 st Place	<u>Carter McCormick</u> , David Dadiomov, Rebecca Trotzky-Sirr, Dima Qato	Prevalence and Distribution of High- Risk Prescription Opioid Use in the United States, 2011–2016	
--------------------------------------	-----------------------	---	---	---

PENN-CPERT ISPE STUDENT CHAPTER

Board: Emily Acton (President; eacton@sas.upenn.edu), Mohsin Shah (Vice-President; mohsin.shah@penmedicine.upenn.edu), Neil Dhopeswarkar (Treasurer; Neil.Dhopeswarkar@penmedicine.upenn.edu)

CHAPTER ACTIVITIES/ INFORMATION

History

The University of Pennsylvania's (Penn) ISPE Student Chapter was formed in Fall 2018, and is housed within the Center for Pharmacoepidemiology Research and Training (CPeRT) (<https://www.cceb.med.upenn.edu/cpert/ispe-student-chapter>). Our Chapter Members include Epidemiology and Biostatistics Masters and PhD students, as well as early-career professionals and post-doctoral researchers, with a diverse range of research focuses and educational backgrounds.

Key Activities/ Initiatives

- Methods Bootcamps: These Bootcamps give Chapter Members the chance to learn from Penn faculty / trainee experts about different epidemiology / biostatistical methods and techniques, with the goal of extending beyond the theory taught in the classroom to the practicalities of using these methods in real data.
- Pharmacoepidemiology Salons/ Brown Bag Lunch Speaker Series: These Salons are a lunchtime speakers' series, where leaders in pharmacoepidemiology from government, industry, and academia are invited in-person or virtually to meet and share insights from their current jobs and overall career paths with our Chapter Members in a causal environment over lunch.
- Inter-Chapter Collaborations and Events: Moving forward, even with the return to in-person events, we plan to continue and grow these Inter-Chapter virtual collaborations to provide new opportunities for our members to participate in the diverse range of exceptional programming taking place across ISPE Chapters, as well as to welcome the perspectives and ideas from Members of other Chapters during our events.
- Field Trips: With in-person trips again becoming possible, we are progressing plans for trips to local industries and governmental agencies, where Chapter Members have opportunities to get hands-on experiences and perspectives about different career opportunities in pharmacoepidemiology.

CHAPTER NEWS/ UPDATES

Methods Bootcamps

- In-person and virtual Bootcamps have spotlighted the theory and practical application of:
 - Data Sources for Pharmacoepidemiologists
 - High-Dimensional Propensity Score Analysis
 - Introduction to Machine Learning
 - Inverse Probability Weighting
 - Mixed Methods
 - Propensity Score Matching
- Upcoming Bootcamps will include series focused on:

- Business Skills for Pharmacoepidemiologists Entering Industry
- Imputation of Missing Data
- Marginal Structural Models
- Specific Real-World Evidence Databases for Pharmacoepidemiologic Research
- And, Reprises of the Bootcamps from Past Years

Brown Bag Lunch Speaker Series

We are planning further Brown Bag Lunch Talks, where students can meet casually over lunch with expert pharmacoepidemiologists from across different fields. For example, we have previously been joined for talks by Dr. M. Miles Braun, MD, MPH (Adjunct Professor at Georgetown University School of Medicine; Formerly Director of the Division of Epidemiology, CBER, FDA), Dr. Shahed Iqbal, PhD, MBBS, MPH (Senior Director of Molecular Epidemiology at Gilead Sciences), and Dr. Darren Toh, ScD (Associate Professor in the Department of Population Medicine at Harvard Medical School and Harvard Pilgrim Health Care Institute). These “Brown Bag Lunches” provide opportunities to discuss these experts’ research, career paths, and guidance for students interested to pursue a career in pharmacoepidemiology.

Virtual Inter-Chapter Collaborations and Events

With the increased ease of Inter-Chapter experiences facilitated by moves to virtual, we have ongoing Inter-Chapter collaborations on educational events with the University of Florida and Rutgers ISPE Student Chapters. These include inviting their members to participate in our Methods Bootcamps and Brown Bag Lunch Speaker Series, and our Chapter Members joining-in their events.

Pre-Pandemic Pictures from Penn/CPeRT ISPE Chapter Events



UNIVERSITY OF MANITOBA ISPE STUDENT CHAPTER

Board: Laila Aboulatta (President; aboulatl@myumanitoba.ca), Sai Krishna Gudi (Vice-President; gudisk@myumanitoba.ca), Lara Haidar (Secretary; haidarl@myumanitoba.ca), Kevin John Friesen (Treasurer; friese13@myumanitoba.ca)

CHAPTER ACTIVITIES/ INFORMATION

This year the ISPE University of Manitoba student chapter hosted the Fourth Annual Pharmacoepidemiology Workshop on January 26-27, 2022, and monthly journal clubs every second Wednesday.

The two-day virtual workshop featured top academic and research experts in pharmacoepidemiology. Invited speakers included Dr Joseph Delaney, University of Manitoba and Ph.D. candidate Kevin Friesen conducted a hands-on session on SAS coding (Introduction to writing Macros for SAS) on the first day. While on the second day, we had invited speakers: Dr Abdullah Maruf from University of Manitoba, Dr Laurent Azoulay, McGill University and Dr. Dr Jason Robert Guertin University of Laval. Finally, this year we had the highest ever recorded number of participants attend our virtual workshop, including students from other Universities all over the world include graduate and undergraduate students.



CHAPTER NEWS/ UPDATES

We are planning to attend ICPE annual meeting 2022. Also, plan to hold ISPE/ISPOR annual summer seminar series during which we plan to invite speakers in different areas.

ISPE MENTOR MATCH AND PEER-MENTORSHIP PROGRAMS

On Friday June 24th, the membership committee held their second annual Virtual Mentor Match. The virtual mentor-match event was attended by 61 people.

This year, the Virtual Mentor Match was accompanied by a webinar on 'Understanding Your Voice and Communication Style' led by Skot Waldron. During the webinar, Skot led attendees through an exercise entitled '5 Voices', which allowed mentors and mentees to discover their leadership voice and how to use it effectively.

After the Webinar and presentations from the membership committee providing information on mentorship, the mentors and mentees participated in a round robin session where they met with their peers and potential mentors and mentees.

The membership committee also introduced a new initiative for 2022 focused on 'Peer Mentorship'. The aim of peer mentorship will be for members of ISPE to form networks to support and learn from each other across a range of areas such as transitioning between careers in Academia vs. Industry and Engaging Inclusively in Pharmacoepidemiology. The peer-mentorship programme will initially be piloted with a small number of volunteers. Further information about how to become involved will be circulated shortly.

If you would like to participate in the mentorship program but have not yet had a chance, please create a profile on the ISPE Exchange and enroll as either a mentor or mentee at (<https://www.pharmacoepi.org/get-involved/mentor-match/>).

The membership committee will be hosting the New Member and Early Stage luncheon at the upcoming International Conference on Pharmacoepidemiology and Therapeutic Risk Management meeting in Copenhagen, Denmark. The luncheon is scheduled for Thursday, August 25th 2022, from 12:45-2:00pm in room C1M5 of the Bella Centre- we look forward to meeting some of you there!

Rohini Mathur & Emily Brouwer

From the membership committee